

2026

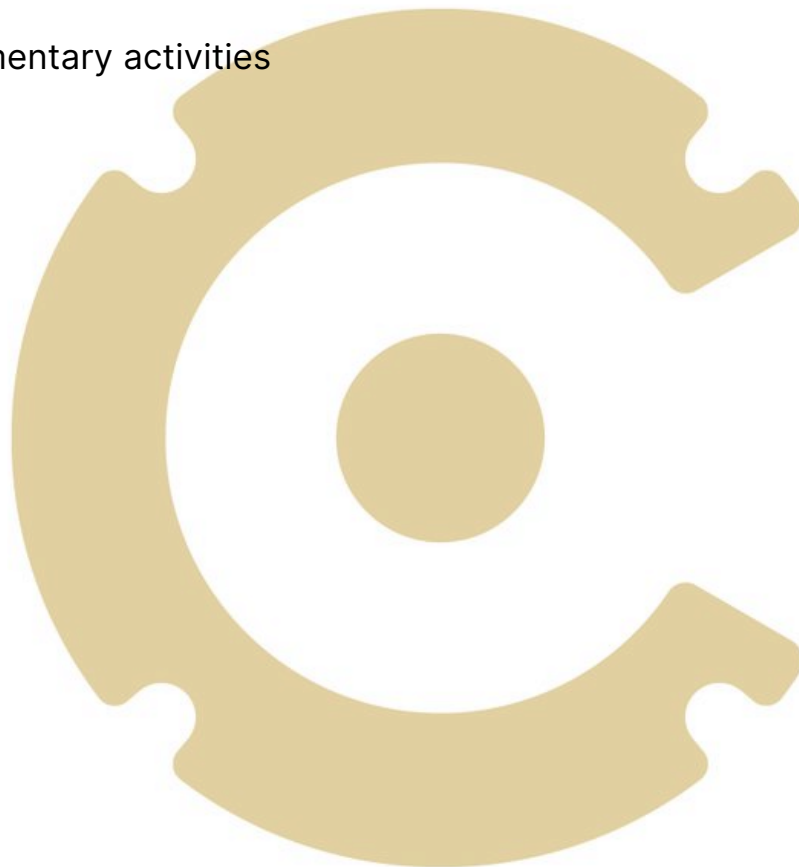
CAVACENTRE

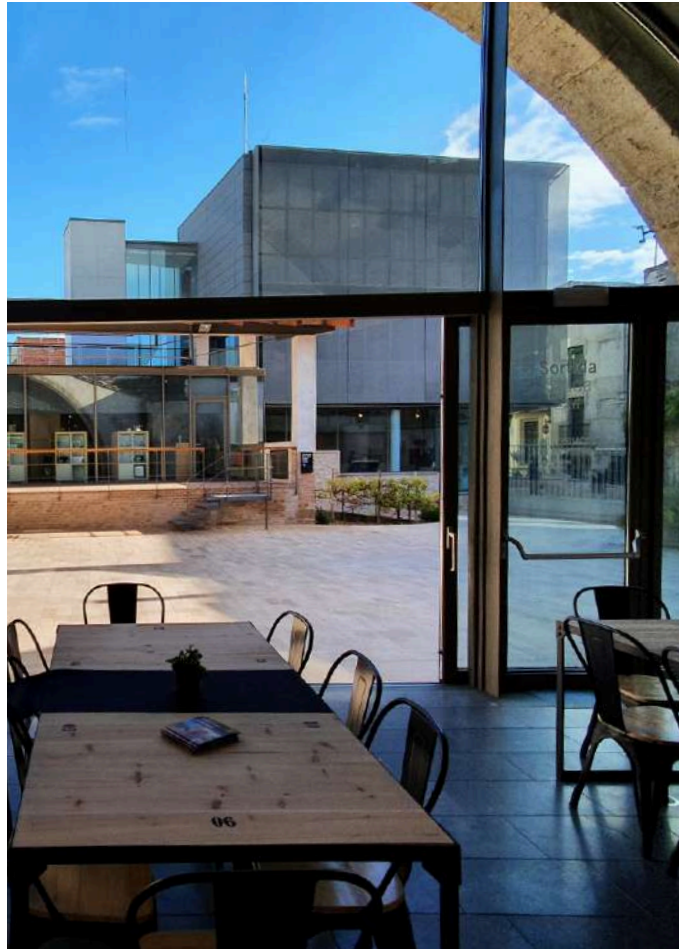
MICE · SPACES FOR EVENTS



Content

1. Origins of Cava Centre
2. Meeting and event spaces
3. Prices and services
4. Complementary activities
5. Contact



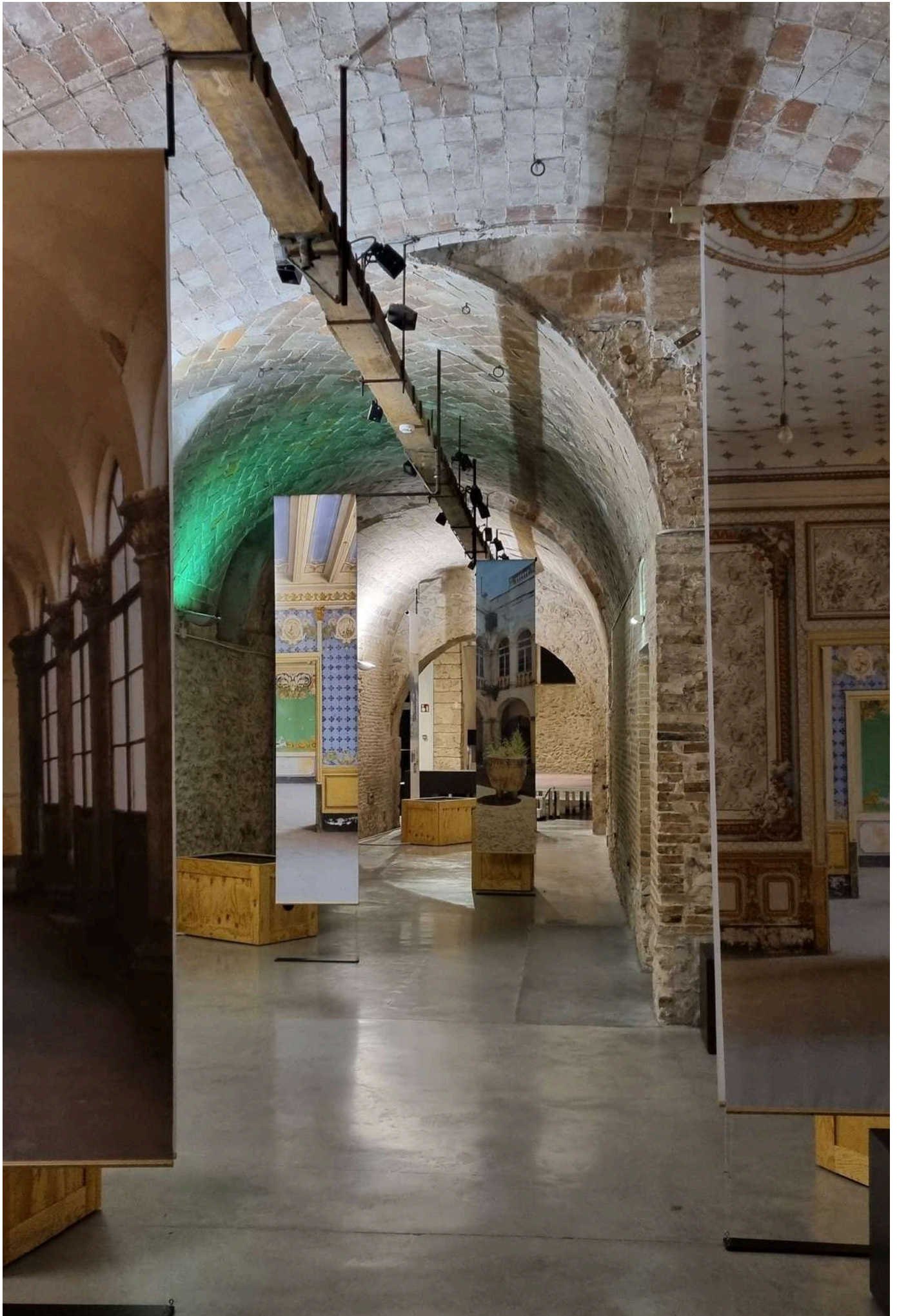


Origins

The Cava Centre is located within the Fassina de Can Guineu architectural complex, a historic building dating from 1814.

La Fassina was part of the Can Guineu estate, which, for centuries, was one of the most important agricultural properties in Sant Sadurní d'Anoia and key to the town's economic and urban development since the end of the 19th century.

Municipal property since 2004, it has been transformed into a unique cultural and tourist facility that hosts numerous activities and also serves as the headquarters of the Sant Sadurní City Council's Tourism Service, which organizes events such as the Cavatast, guided visits, routes, exhibitions, tasting sessions, and other activities.



Meeting and event spaces

1

Historic wine cellar, with a total area of 288 m², featuring a main hall defined by three stone arches rising from the floor and a double-pitched roof with exposed wooden beams and tiles. The hall connects to a 136 m² vaulted cellar with a semi-circular ceiling and herringbone-pattern floor tiles. The space is equipped with a projector and screen, microphones, and Wi-Fi.

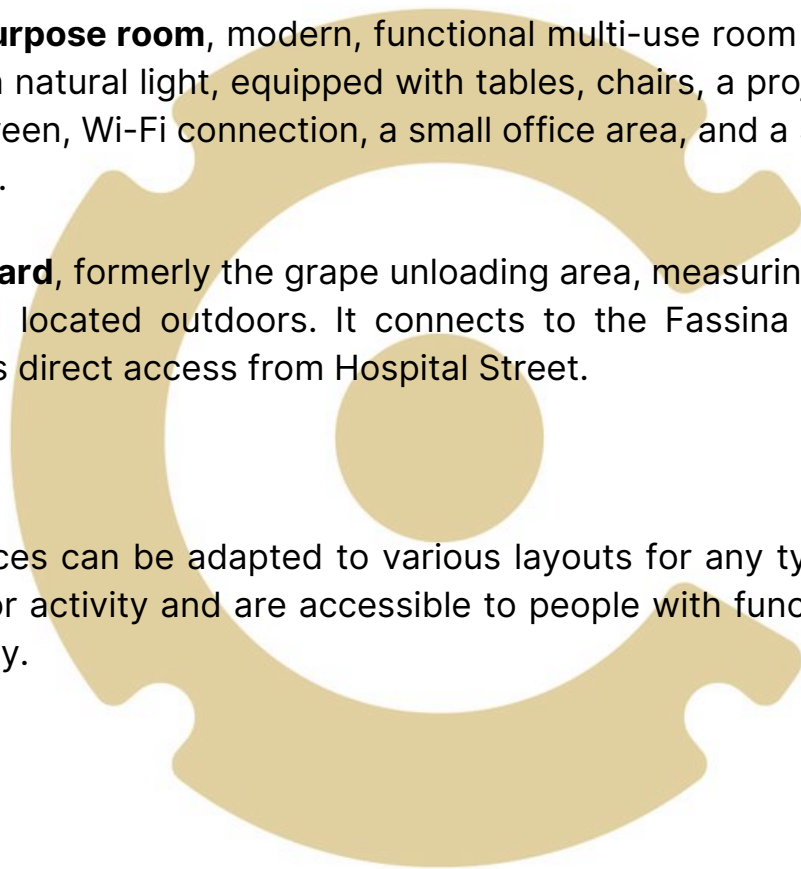
2

Multipurpose room, modern, functional multi-use room of 66 m² with natural light, equipped with tables, chairs, a projector and screen, Wi-Fi connection, a small office area, and a 56 m² terrace.

3

Courtyard, formerly the grape unloading area, measuring 225 m² and located outdoors. It connects to the Fassina cellar and has direct access from Hospital Street.

All spaces can be adapted to various layouts for any type of event or activity and are accessible to people with functional diversity.





Public rates

Regulated by ordinance no. 12 of the City Hall of Sant Sadurní d'Anoia

1 Cellar € 175 / hour · € 1,000 / day (VAT exempt).
Capacity for 118 people in banquet-style layout, and for 220 people in theatre-style layout.

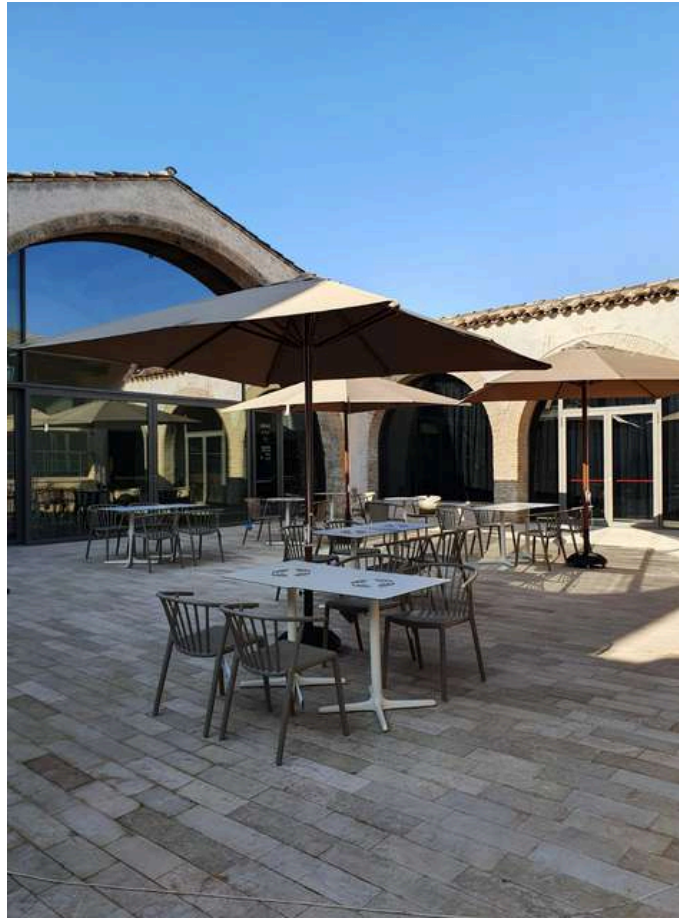
Includes projector and screen, microphones, Wi-Fi, post-event cleaning, air conditioning, and accessible restrooms.

2 Multipurpose room € 75 / hour · € 200 / day (VAT exempt).
Capacity for up to 20 people in a boardroom-style layout and 30 people in a theatre-style layout.

Includes a projector and screen, microphones, Wi-Fi, post-event cleaning, air conditioning, and accessible restrooms.

3 Courtyard € 400 (VAT exempt).
Capacity for up to 80 people in banquet-style layout, and 150 in theatre-style layout.

10% discount when renting more than one space (this discount will be applied to the total amount to be paid).



Complementary activities

1

Vinum Titillum, a visit full of experiences

Fun, participative and original tour to discover the history, essence, enigmas and secrets of cava with a large-format audiovisual presentation and a refreshing cava tasting at the end of the visit.



Duration:

1 hour

Price:

€ 6.00 / general public

€ 4.50 / agency

Services included:

Visit with accompanying guide

Audiovisuals and informative capsules about key moments of cava

Phylloxera Festival Space

Cava tasting

Shop

Languages:

Tours in Catalan, Spanish and English



Complementary activities

2

Combined visits

The Cava Centre offers combined visits with other spaces and tourist resources in Sant Sadurní, including wine and cava wineries, a chocolate factory, restaurants where you can enjoy a traditional menu, and specialized services offering routes and experiences.



10 proposals for visits and combined activities

Consult us, choose the one you like best and get ready, glass in hand, to enjoy Sant Sadurní d'Anoia to the fullest!

Services included:

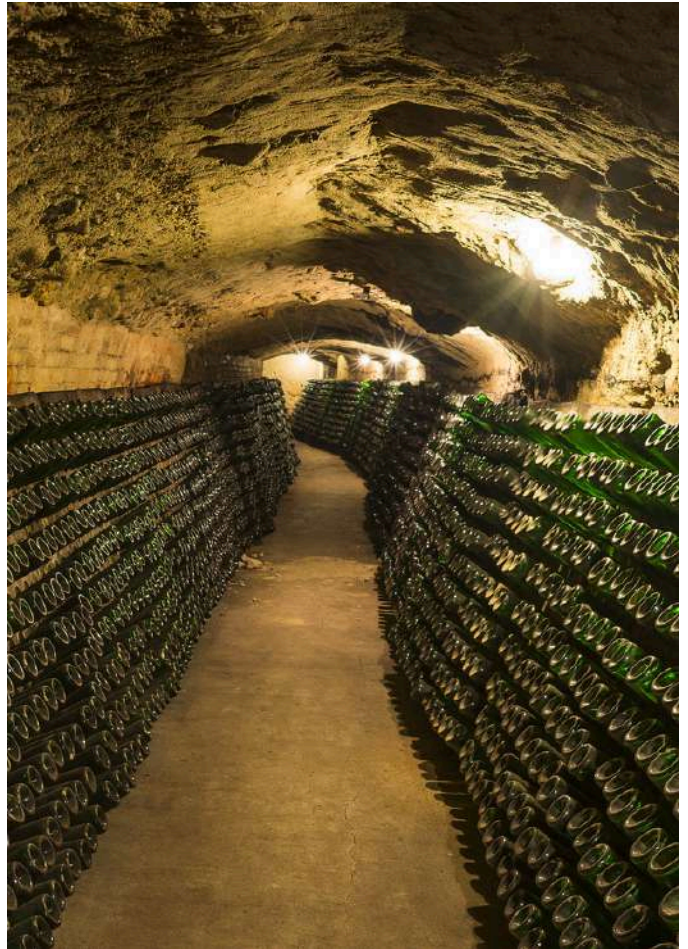
Management of reservations for all spaces.

10% discount on standard rates for agencies.

Centralized payment for all visits and activities.

Languages:

Tours in Catalan, Spanish and English



Contact

CAVA CENTRE

Sant Sadurní d'Anoia Town Hall

C. de l'Hospital, 23, La Fassina de Can Guineu

Sant Sadurní d'Anoia (Barcelona)

Tel. +34 93 891 31 88

A/e. cavacentre@santsadurni.cat

santsadurni.cat/cava_centre

